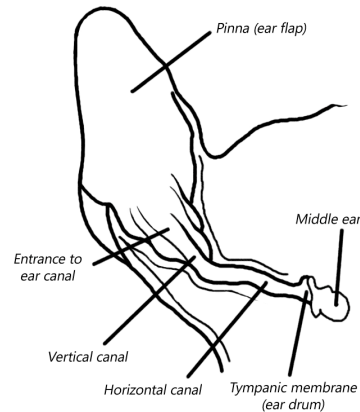


Treating your dog's ear

Anatomy of a dog's ear:



Cleaning your dog's ear:

- If possible get someone to gently restrain the dog for you, either outside or in a room with wipe clean surfaces
- Lift the ear flap and squeeze a moderate volume (enough to fill the canal) of the fluid into the entrance to the ear canal
- Massage the ear canal
- Use cotton wool to wipe out any material that rises to the surface
- Do not put any cotton buds into the ear as you risk damaging the ear drum and impacting the wax into the ear

Applying antibiotic drops into the ear:

- Always leave at least 30 minutes after cleaning before applying drops unless specifically told otherwise
- Lift the ear flap and squeeze a small amount into the ear canal
- Massage the ear canal and then leave
- Always complete the recommended course of treatment and then discard the bottle. Drops cannot be reused at a later date.

Try to avoid touching the bottles against the ear or you could spread infection between the ears. If this happens clean the bottle before using again. If the dog experiences any discomfort during these procedures then please ring the surgery for advice.

